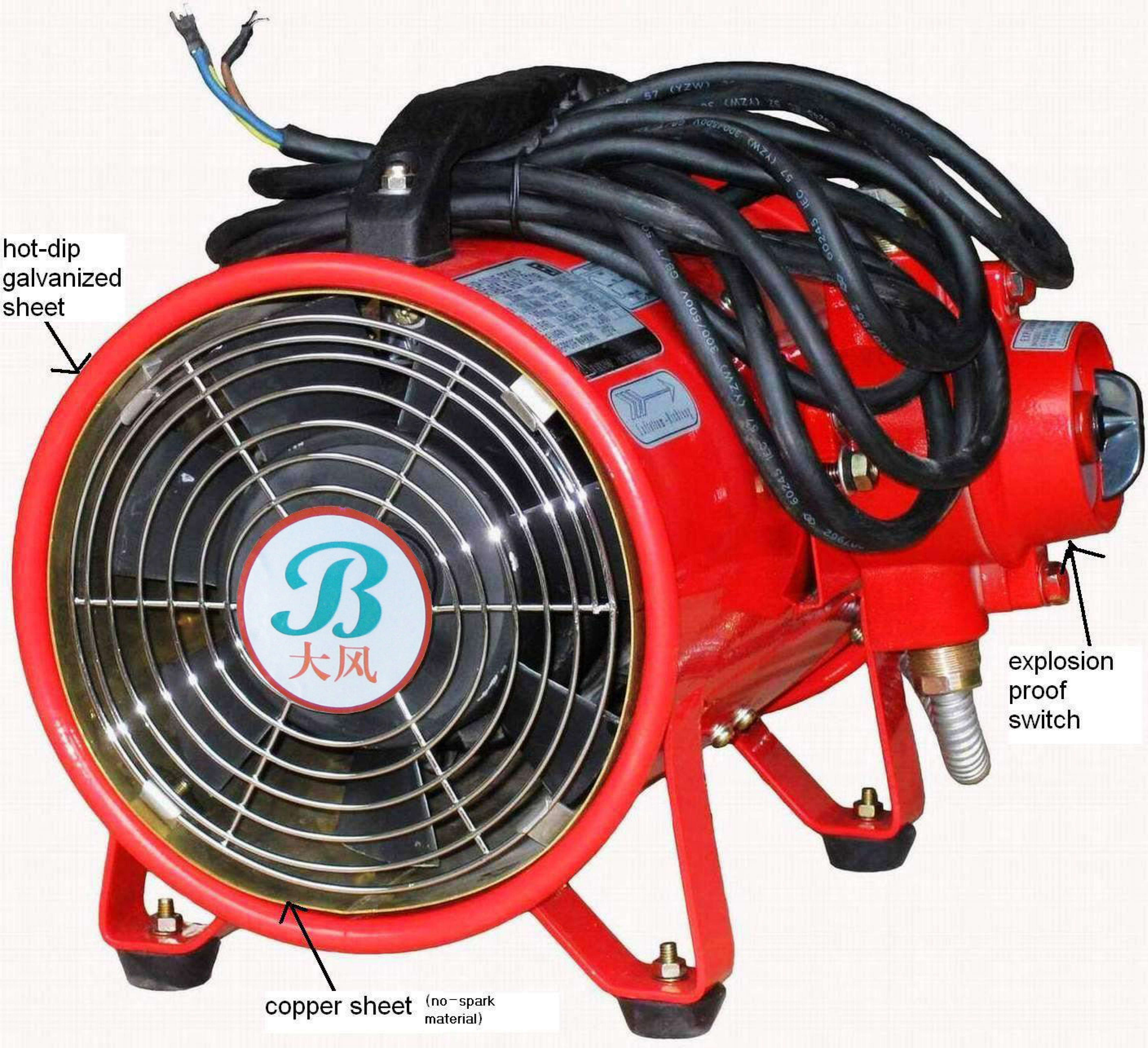


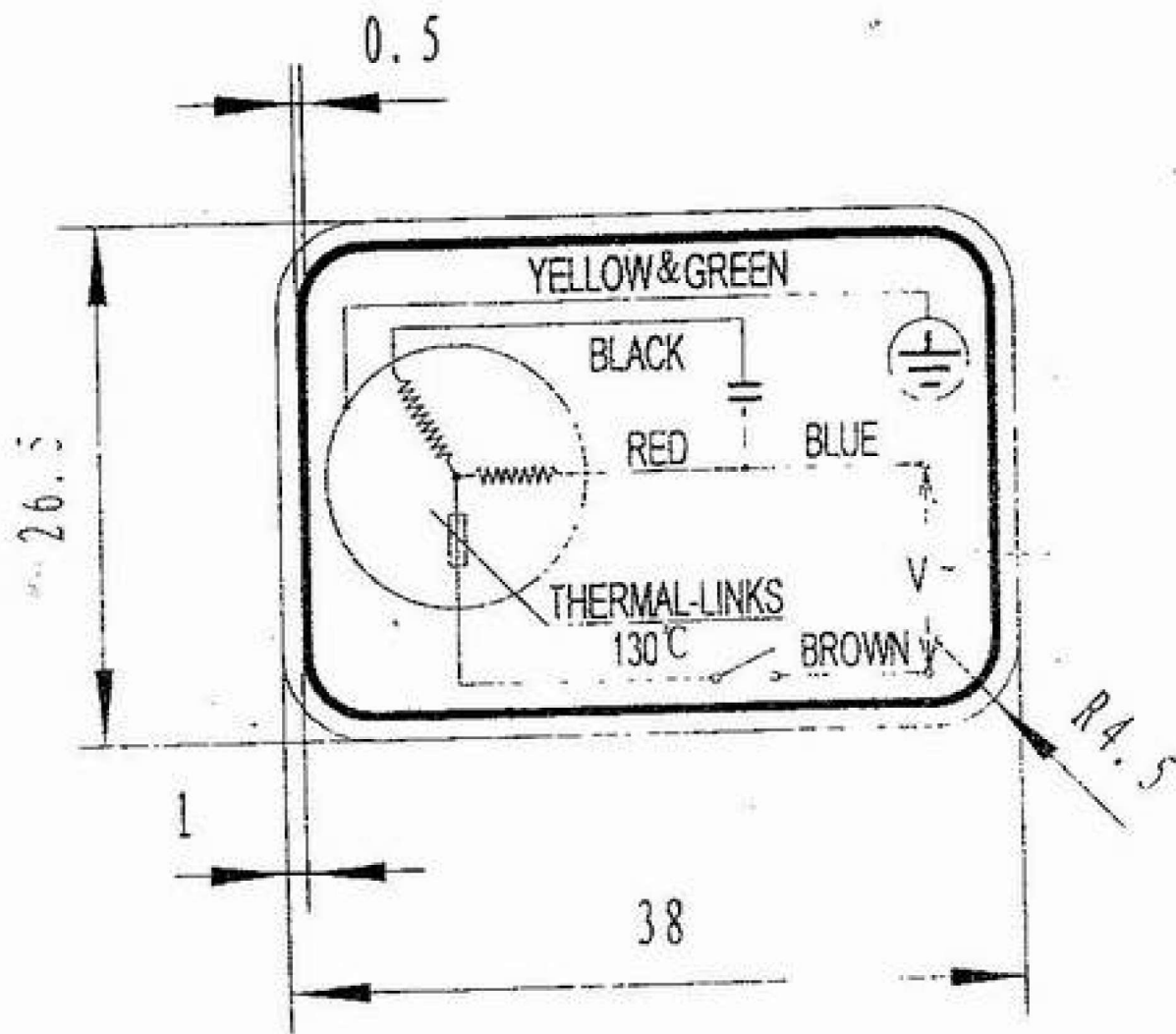
hot-dip
galvanized
sheet



explosion
proof
switch

copper sheet (no-spark
material)

A Circuit Diagram



Assembling Drawing .

AIR-FLOW



358

PORTABLE VENTILATOR

$\phi 11 \pm 1$

CABLE

FLAMEPROOF JOINT

SEALING RING

BOLT

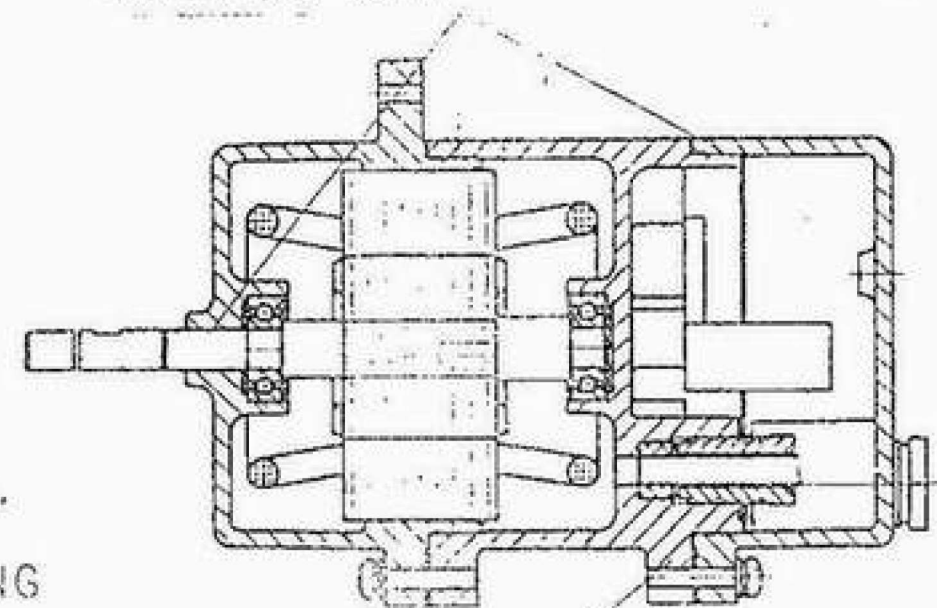
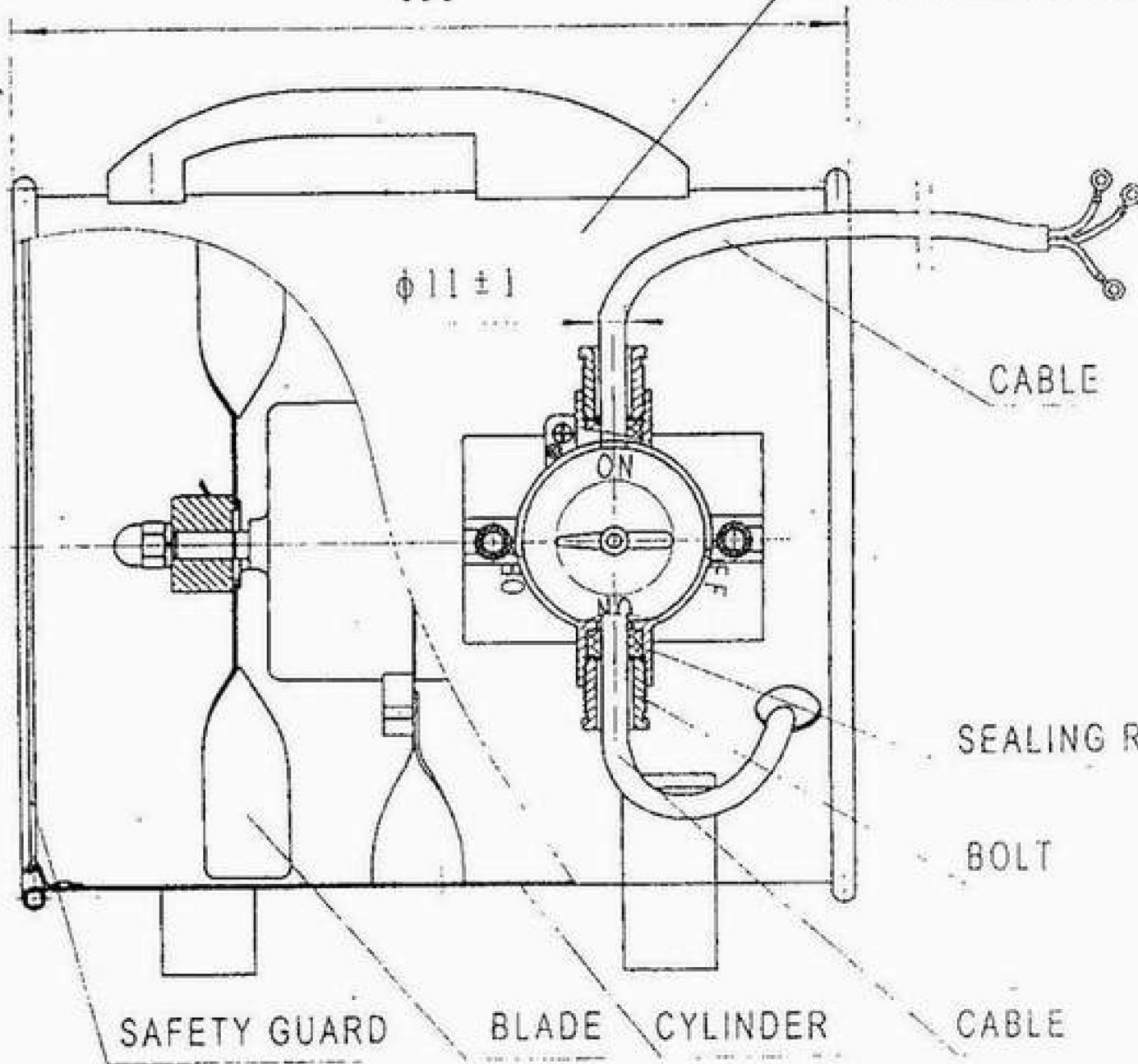
MOTOR

SAFETY GUARD

BLADE

CYLINDER

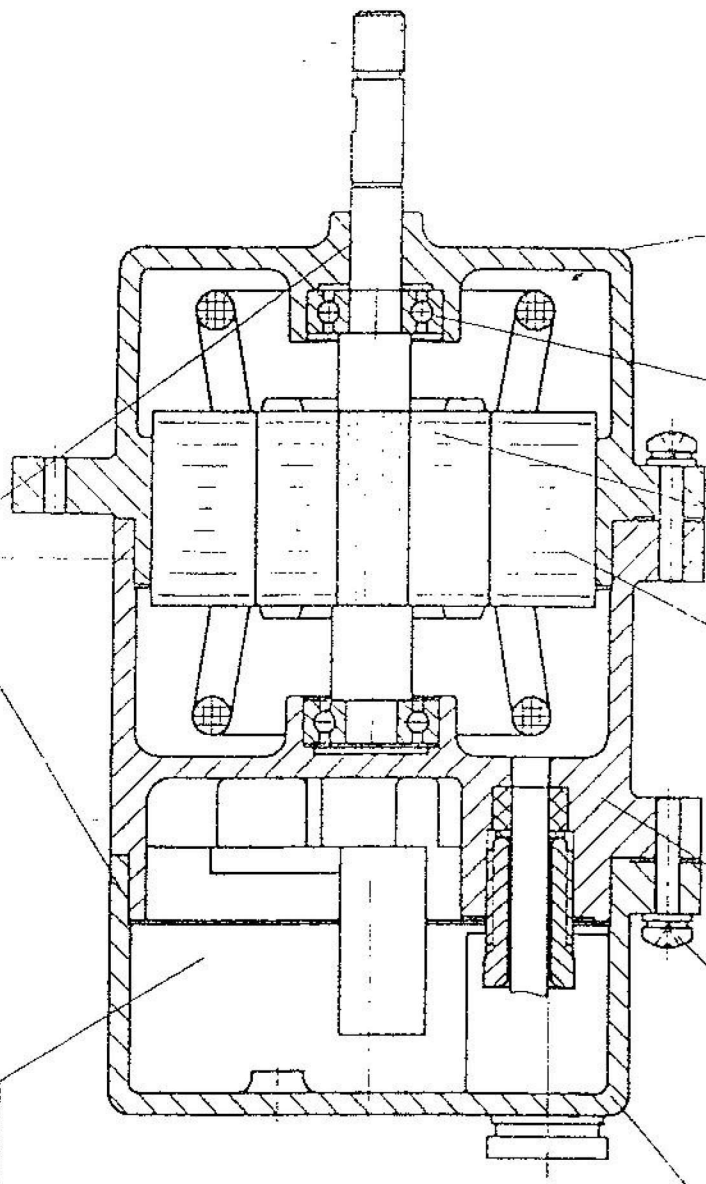
CABLE



Components Drawing

FLAMEPROOF JOINT

MOTOR



Back Cover
Screw

Back Cap

Stators/Rotor

Bearing

Front Cover

EXPLOSIVE-PROOF VENTILATOR OPERATION INSTRUCTION

A. Marked "d II BT4" indicates that "d" for explosive-proof. "II" for factory use explosive-proof appliance. "B" for explosive gas B class. "T4" for The temperature of medium should not be over 135 °C). The Unit is suitable to the place where the spontaneous combustion temperature of explosive mixed-gas should be over 135 °C, such as extraction and refinement of petroleum, making of various kinds of benzene, alcohol and medicine, painting, rubber producing and so on, related factory, workshop, warehouse for ventilating.

B. Use condition

1. Altitude not exceed than 1000m.
2. House temperature not exceed than -20 °C to + 40 °C.
3. Relative humidity not exceed 90% (25 °C).
4. The places of the spontaneous combustion temperature should be over 135 °C.

C. Caution

1. Before using, turn blades with hand, to be sure that the distance between blades and grill of frame must be uniform without collision.
2. Voltage and frequency should tally with those marked on the nameplate.
3. When heavy vibration of blades and abnormal noise occur during operation, cut off electricity supply immediately and look for cause.
4. Must be protected the power switch of explosive-proof cover face from collision.
5. Check the unit once a year, replace lubricant in gear box.

